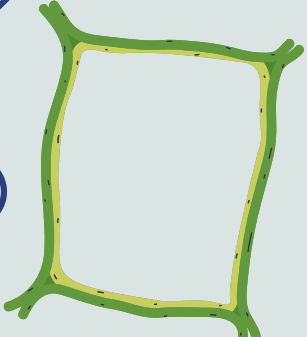
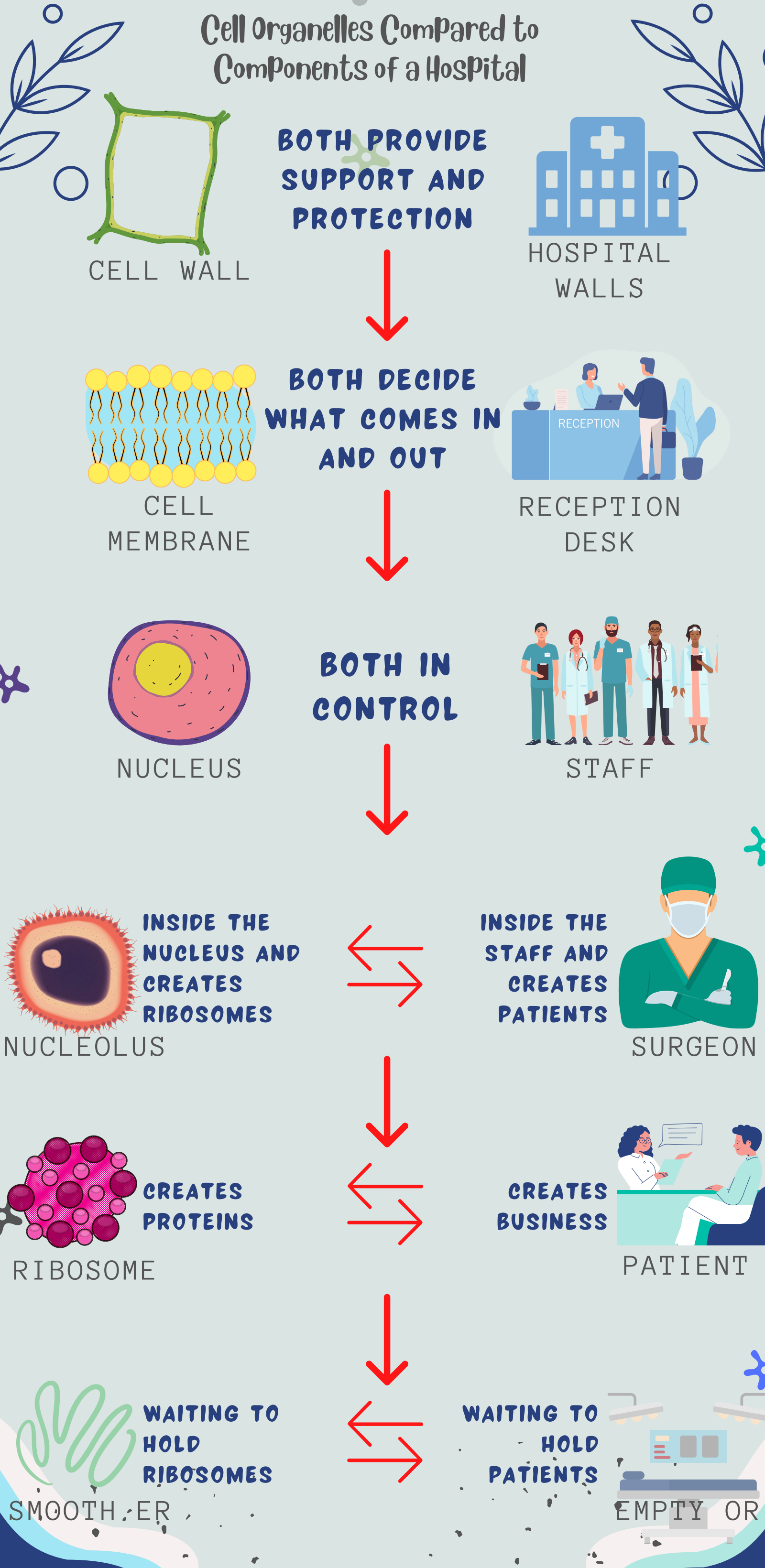


A CELL IS A LOT LIKE A *Hospital*

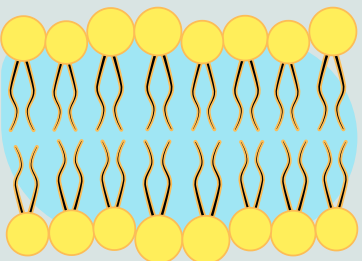
Cell Organelles Compared to Components of a Hospital



CELL WALL



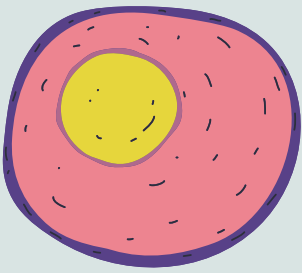
HOSPITAL WALLS



CELL MEMBRANE



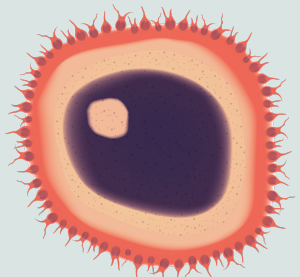
RECEPTION DESK



NUCLEUS



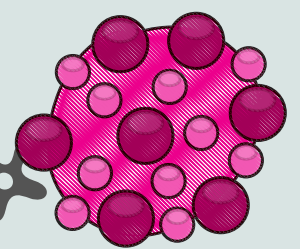
STAFF



NUCLEOLUS



SURGEON



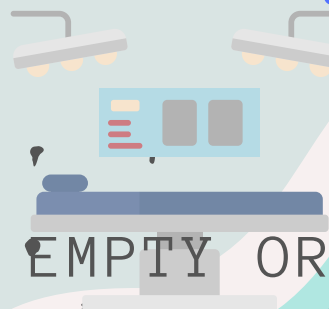
RIBOSOME



PATIENT



SMOOTH ER



EMPTY OR

